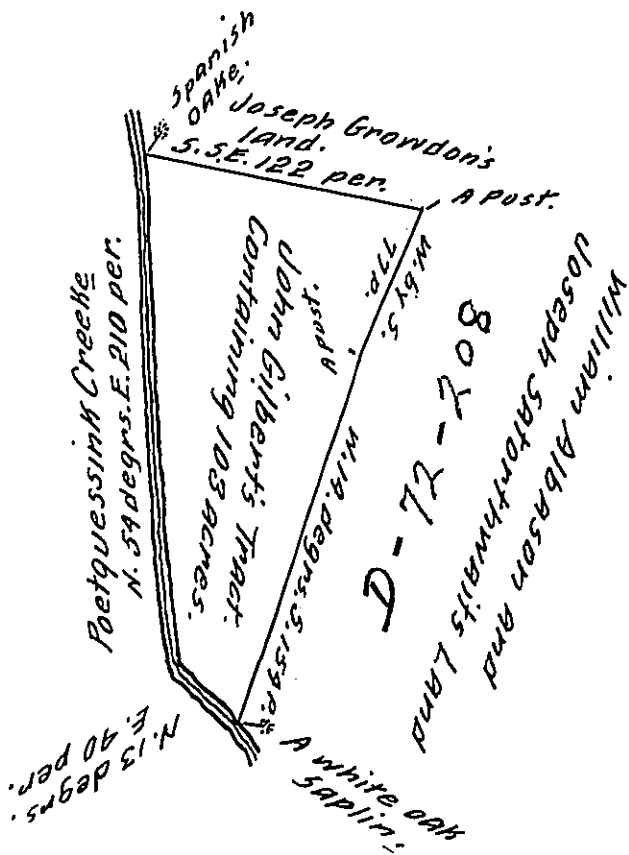


This is Revised but the warrant where by  
 was ~~the~~ survey'd cannot be found  
 J.T.



By virtue of a warrant from the Commissioners of Property to me directed bearing date the 10<sup>th</sup> day of the 1<sup>st</sup> month 170<sup>1/2</sup> to execute all warrants directed to Phineas Pemberton and not executed, And pursuant to a warrant from the said Commrs. to the said Phineas Pemberton dated the 21<sup>st</sup> of the 11<sup>th</sup> month 1701, Resurveyed unto John Gilbert a tract of Land in Bensalem in Bucks County, Beginning at a Corner marked Spanish Oak at Joseph Growdon's Corner, Standing by Poetquessink Creek, Thence by the said Growdon's line S. S. E. 122 perches to a Post, Then by Albason's and Satorthwait's Land W by S 77 perches to a Post by the Road, Then W 14 degrs. S. 154 per to a white oak Saplin marked for a Corner standing by the said Creek, Then up the same N. 13 degrs. E. 40 per. Then N. 59. degrs. E. 210 per. to the first mentioned Spanish oak containing 103 Acres Resurveyed the 28<sup>th</sup> day of the first month 170<sup>1/2</sup>

By me John Cutler.

IN TESTIMONY that the above is a copy of the original remaining on file in the Department of Internal Affairs of Pennsylvania, made conformably to an Act of Assembly approved the 16th day of February, 1833, I have hereunto set my Hand and caused the Seal of said Department to be affixed at Harrisburg, this twentieth day of May 1909-

*Wm. H. Howard*  
 Secretary of Internal Affairs.